



Life is More Fun

When You're Creative!

Button Queen™

Stitch 'Em Up!™

Wildly Wonderful Wearables™

www.buttonqueen.com

www.stitchemup.com

www.wwwearables.com

A liquid gel which comes ready to use for devore' or "burnout" processes on fabrics.

Fiber Etch® works on paper and wood too!



Fiber Etch® Etching Gel

from Silkpaint!

With Fiber Etch You Can...

- ▶ Make your **own designer fabrics**
- ▶ Create **transparent areas** on fabrics
- ▶ Add decorative lines to **papers**
- ▶ **Fiber Etch®** may be:
 - ▶ Applied directly
 - ▶ Silkscreened
 - ▶ Stamped with foam stamps
 - ▶ Brushed onto the fabric
 - ▶ Applied with the **AirPen® Pro**

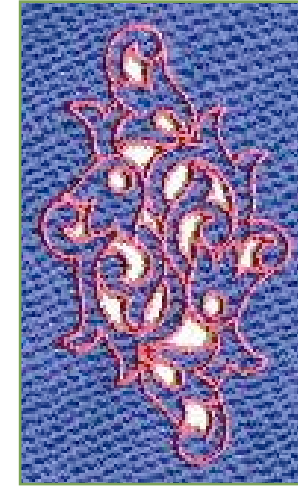


The movie Lemony Snicket's used
GALLONS of Fiber Etch to
achieve the unique period
costumes and set designs.





Plant fibers are completely removed using Fiber Etch®.

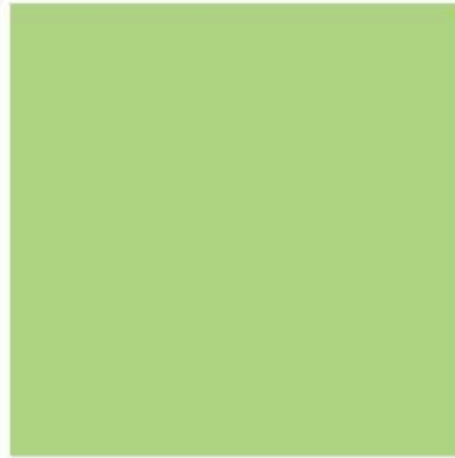
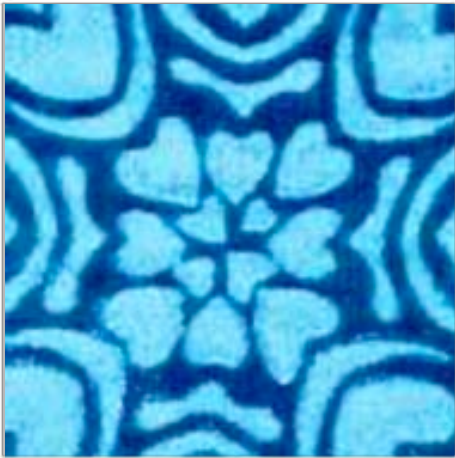


Blended fabrics remain leaving decorative effects.



Fiber Etch® also works on **specialty papers** and **wood**.





Rayon Thread
on Linen

Freezer Paper
Stencil on Velvet

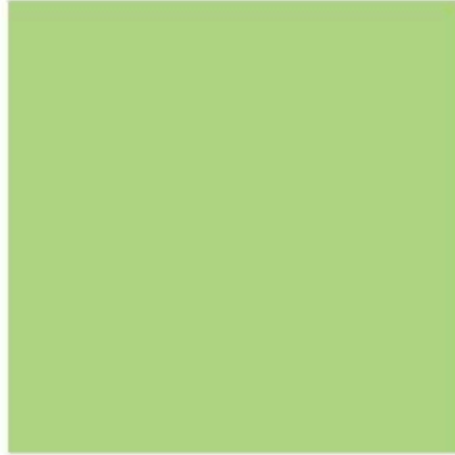


Cottons Layered
with Solvy



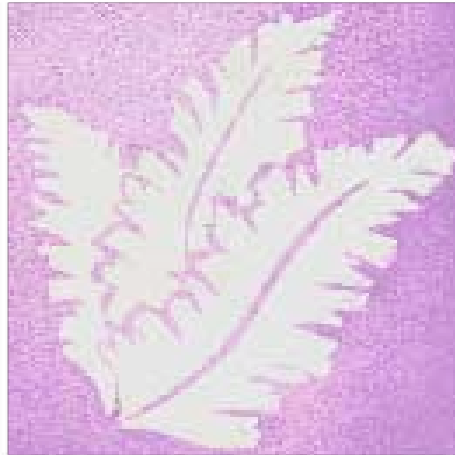
Wood Burned
Leaf Pattern

Office Supply
Dots on Velvet



Etched Velvet
Paper™

Rayon-Silk Satin



Watercolor
Leaf

Leaf Etched



Velvet-Silk
Pillow



Black Cotton and
Bright Polyester



Computer Machine
Design on Satin-Silk

Cotton and Solvy



Velvet-Silk Etched



Linen-Poly
Cutwork

Black Cotton
and Poly



Etched Rayon-Poly



Silk Linen
Weft

Etched
Velvet





Digitized Machine Cutwork



Velvet Silk
Template Design

Satin-Silk
Stamped Design



Use Fiber Etch to Easily Create Fabulous Looks on Fabric, Paper, and Wood

We have samples!
Ask us to show you...

Holly Brackmann
Silk/rayon velvet with burnout
and fiber reactive dyes

